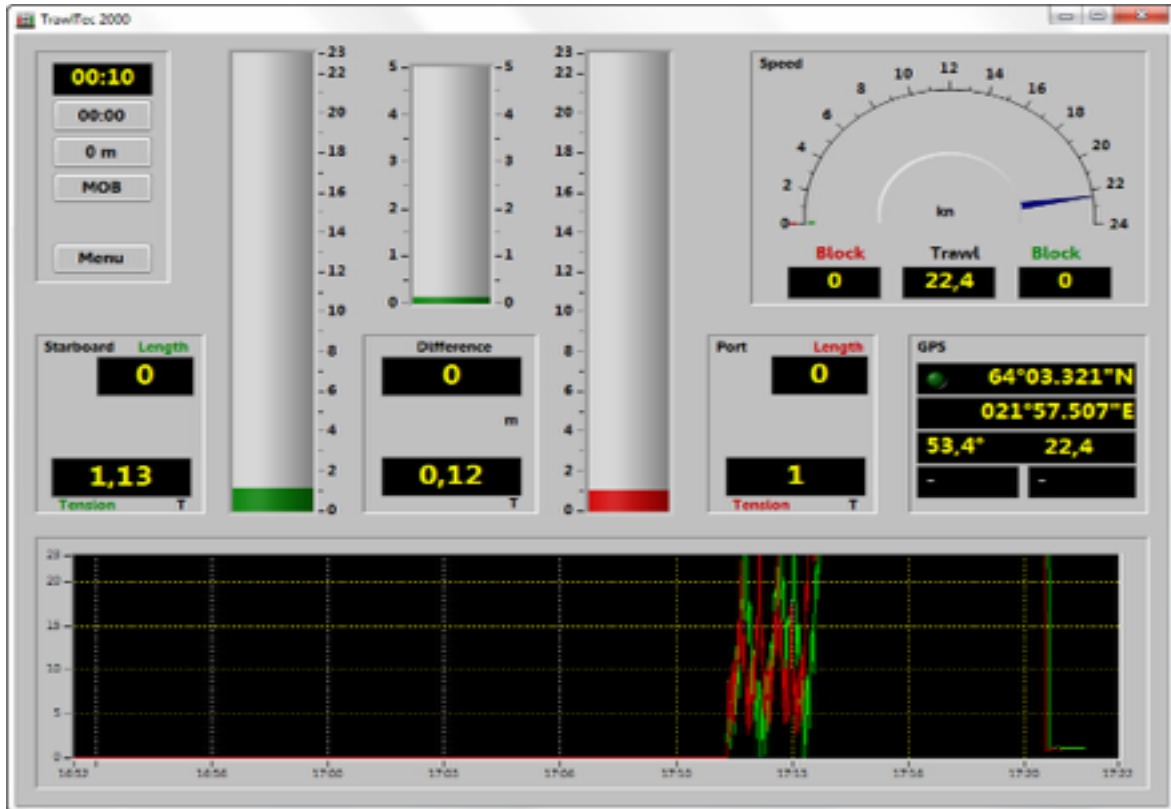


Trawl Tec 2000

Trawl Tec 2000 is based on Trawl tec 1500 which has been used worldwide with good results.

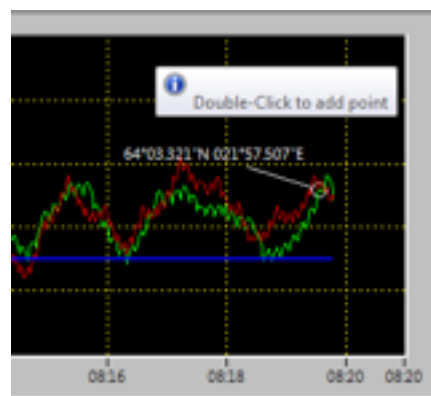


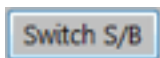
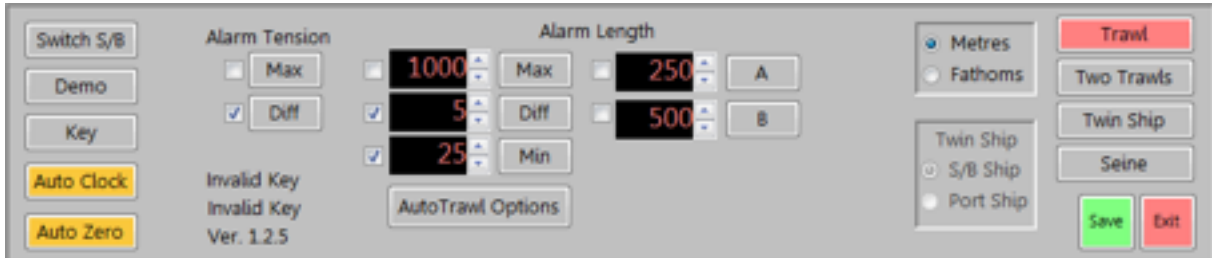
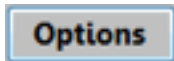
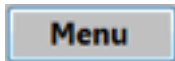
00:06 Towing clock

00:00 Zeroing towing clock

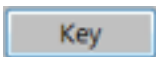
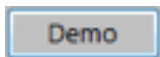
0 m Zeroing tow length.

MOB Man over board positioning point.



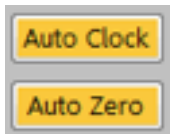


button is used to change between starboard and port sides. This is done to make it easier to control the winches if the operator is for example looking back on the ship while watching the screen.

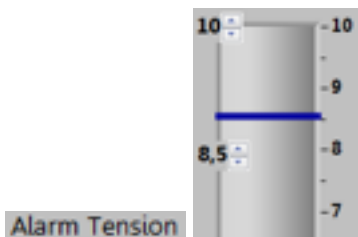


buttons are to switch from Demo mode over to an active Trawl tech.

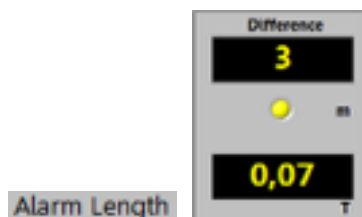
NOTE Trawl Tec 2000 uses a USB key to activate the program.



The buttons auto clock and auto zero make it unnecessary to zero the clock and wire length before shooting the trawl. The system zeros the clock and length 5 minutes after the otter boards are in the gallows and activates after 25 fathoms have been released again.



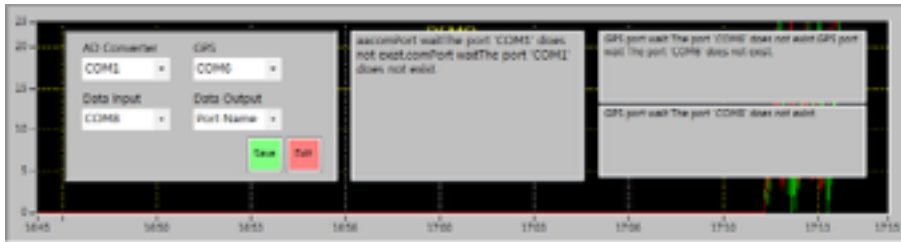
Alarm Tension



Alarm Length

is activated by ticking in the box and choosing Diff. Then a **Windows Media Player** window opens where sounds can be selected. New sounds can be added if needed.

Metres/Fathoms. Here the operator can select between metres and fathoms for wire measurement.



AD Converter com port for Micro computer.

GPS for port of GPS system.

Data Input is used for Send receiver which is used when two ships tow one trawl.

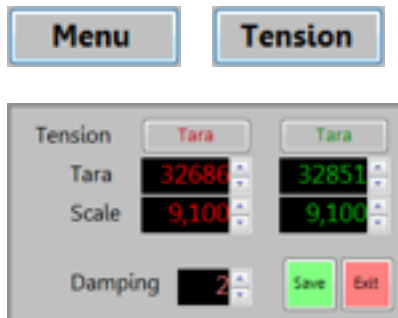
Data Output Is used when Trawl Tec 2000 sends information to the PLC which is used to control the winches.



Length **Range** **Coil Length** is used when the program is set on Seine Tec.

Finetune **Size** is used when the wire length is set. First the winch that is to be used is selected f.ex. winch with **SK230** wheel is fine tuned with **Finetune** these numbers (0,490) should always be the same on starboard and port side.

When using SK-370 three wheel winches SK-370 is selected and then fine tuned.

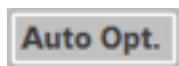


When Trawl Tec 2000 is setup for the first time the wire is put through the winches and is loose in the winch the button **Tara** is pushed. If all is normal then the window should show 32000 til 33000. **NOTE: NEVER USE TARE WHEN TENSION IS ON THE WIRE**

Then a known weight is put on the wire behind the main winch and then fine

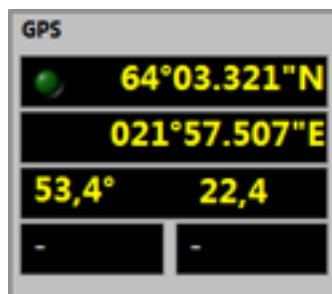
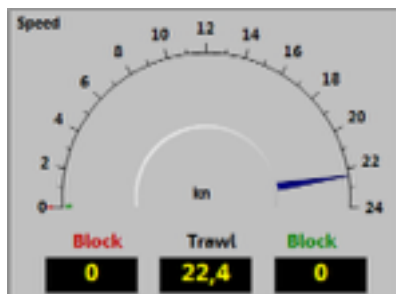


tuned until the correct weight is up. The weight is shown in window in the main screen , in this case 4.230 kg



Auto Option is not active unless using PLC computer and licence.

Speed of ship, wire and trawl.

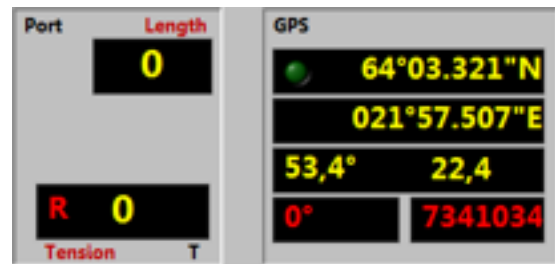


It is possible to change the speed by clicking the highest number which opens up arrows where the speed can be set.

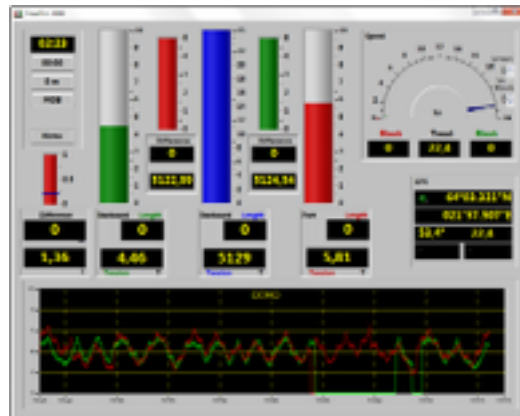
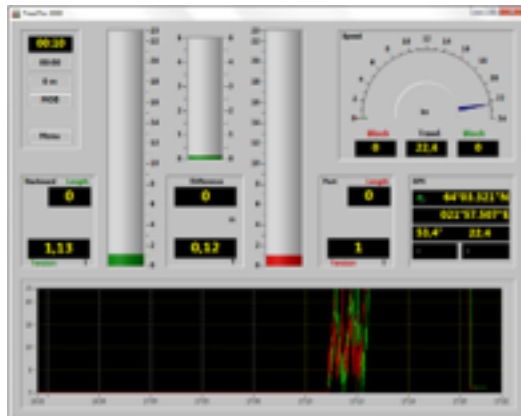
GPS bearing and distance between ships when two ships are trawling together.



Trawl



Two Trawls



Twin Ship

Seine

